

MA.P.E./Cr 07

MApei Performance Enhancer /Cr
Cr(VI) Reducing Additive - Controlled Release Technology

DESCRIPTION

MA.P.E./Cr 07 is a micro-granulated chromate reducing agent for cement and ready mix mortars. It can be added to the mill during the cement grinding process or during any mixing process.

MA.P.E./Cr 07 is based on a brand-new "controlled release" technology, developed by Mapei and Patent Pending. It ensures the production of cements and cement-based products without Cr(VI), according to the European directive 2003/53/EC.

CHARACTERISTICS

MA.P.E./Cr 07 is composed of encapsulated and micro-granulated antimony trioxide in a special polymer. Once dispersed in cement, during the cement hydration process micro-granules are dissolved thus releasing the reduction agent.

MA.P.E./Cr 07 allows the use of antimony trioxide without the health related risks associated to the inhalation of fine dust particles.

SUGGESTED DOSAGE

Portland cements: 12-15 g/t for each ppm of Cr(VI)

The dosages may be slightly different depending on mill conditions.

The additive dosage, in any case, has to be optimized through a reliable industrial trial.

PACKAGING

MA.P.E./Cr 07 is available in (big) bags according to the end-user's needs.

STORAGE

Any dilution and contamination with other substances must strictly be avoided, with particular reference to other products for hexavalent chromium reduction.

Shelf life of **MA.P.E./Cr 07** is at least 12 months, if packaging is kept closed and correctly stored.

SAFETY INSTRUCTIONS

During the usage of **MA.P.E./Cr 07** wear protective gloves and safety goggles and take the usual precautions for the handling of chemicals. If the product comes into contact with the eyes or skin, wash immediately with

plenty of clean water and seek medical attention.

For further and complete information about the safe use of our product please refer to our latest version of the Material Safety Data Sheet.

PRODUCT FOR PROFESSIONAL USE.

WARNING

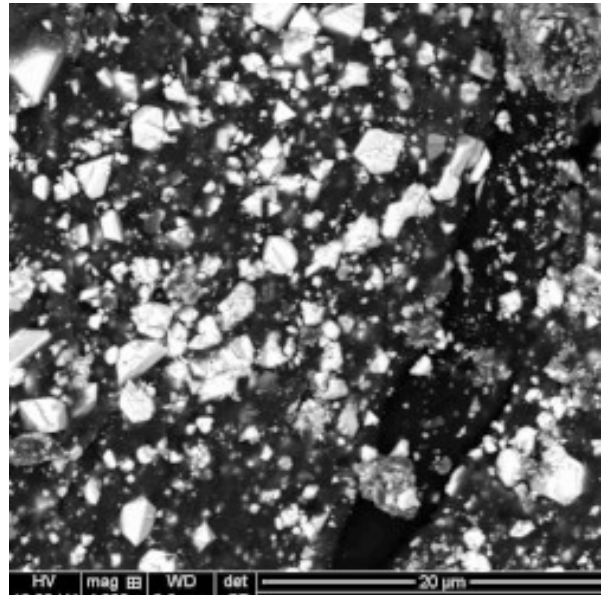
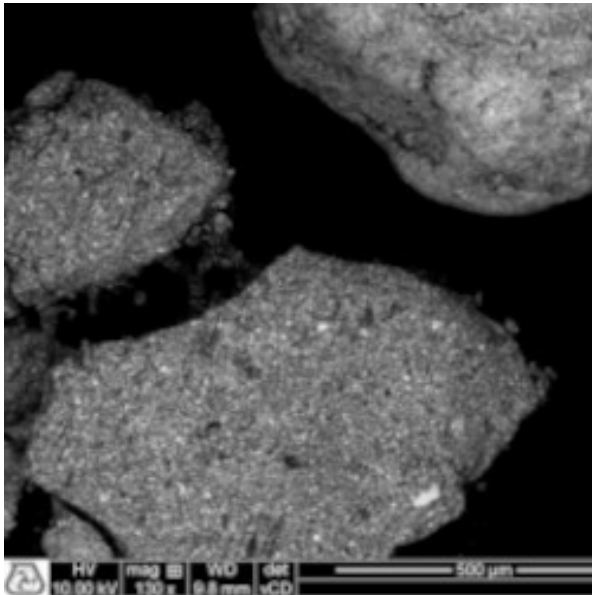
N.B. – Although the technical details and recommendations contained in this product report correspond to the best of our knowledge and experience, all the above information must, in any case, be taken as merely indicative and subject to confirmation after long-term practical applications: for this reason, anyone who intends to use the product must ensure beforehand that it is suitable for the envisaged application: in any case, the user alone is fully responsible for any consequence deriving from the use of the product.

REACH

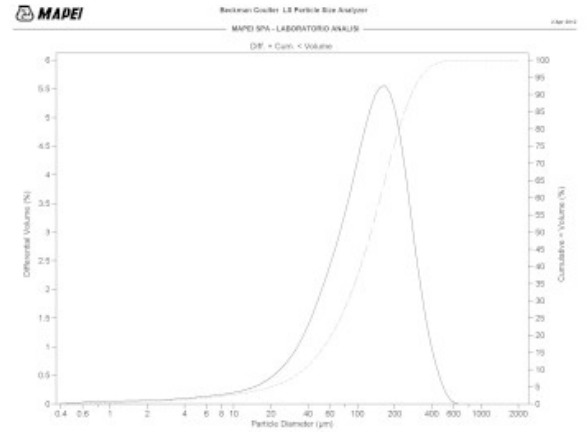
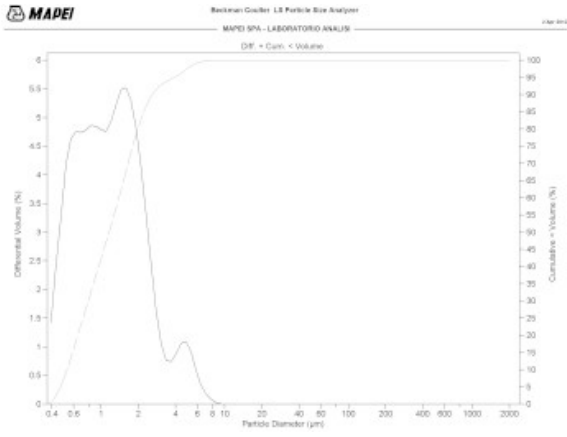
Mapei Cement Additives are fully compliant with REACH regulation.

CUSTOM TARIFF

38244000



Images collected with SEM (Scanning Electron Microscope) showing **MA.P.E./Cr 07** granules (dimension: 500 µm) composed of antimony trioxide (white particles) encapsulated in polymer (dark matrix).



Particle size distribution (laser powder diffraction) showing free antimony trioxide (left, particles entirely below 10 µm) and **MA.P.E./Cr 07** (right, 40-600 µm PSD).

Mapei S.p.A.

Via Cafiero, 22, 20158, Milano



+39-02-376731



www.mapei.com



mapei@mapei.it

03476-01-2023 gb