

MA.P.E./Cr 07

**MApeI Performance Enhancer/Cr 07
Cr(VI) Reducing Additive –
Controlled release technology**

DESCRIPTION and CHARACTERISTICS

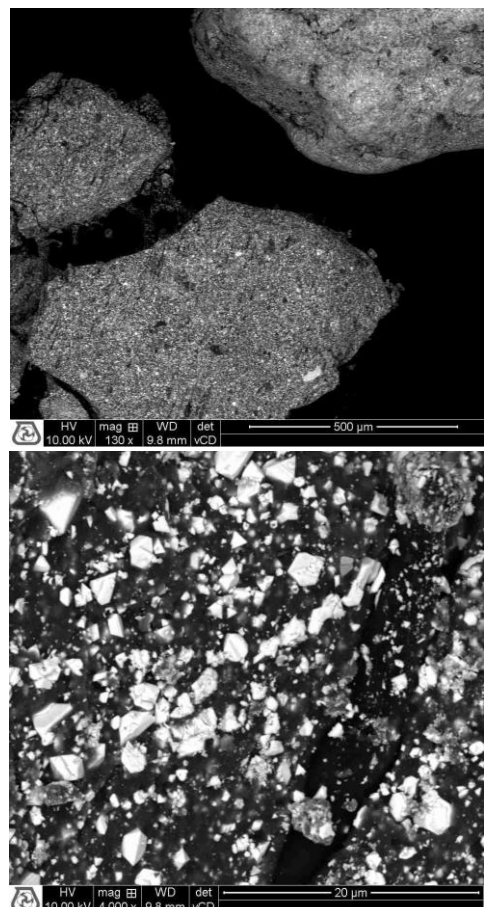
MA.P.E./Cr 07 is a micro-granulated chromate reducing agent for cement and ready mix mortars.

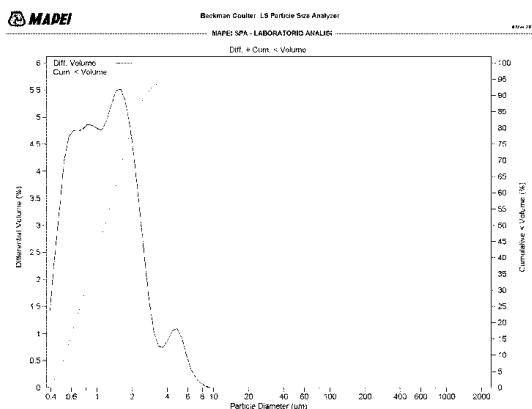
MA.P.E./Cr 07 is based on the brand new “*controlled release*” technology, developed by Mapei and patent pending.

MA.P.E./Cr 07 is composed of antimony trioxide *encapsulated* and *micro-granulated* in a special soluble polymer. When dispersed in cement, during mortar or concrete preparation, micro-granules are dissolved, thus releasing the reducing agent.

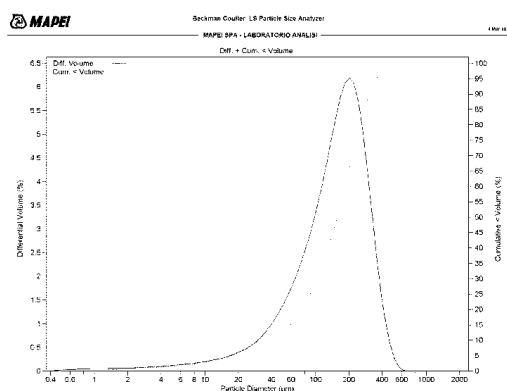
MA.P.E./Cr 07 allows the use of antimony trioxide *without the health risks* associated to the inhalation of fine dusts.

Images collected with SEM (Scanning Electron Microscope) showing MA.P.E./Cr07 granules (dimensions: 500 µm) composed of antimony trioxide (white particles) encapsulated in polymer (dark matrix).





Details of particle size distribution (obtained with laser powder diffraction) showing free antimony trioxide (above, particles completely below 10 µm) and MA.P.E./Cr 07 (below, 40-600 µm PSD).



UTILISATION and DOSAGE

MA.P.E./Cr 07 can be dosed directly in the cement mill, or during cement bagging or blending using a suitable powder dosing system. Generally speaking we suggest a dosage around 15 g/t for each ppm of Cr(VI) in the cement.

Optimised dosages are obtained when MA.P.E./Cr 07 is perfectly dispersed in cement: the better the dispersion, the lower the dosage. For this reason, particular care has to be taken in proper dispersion of micro-granules in cement. Performances of hexavalent chromium reduction are similar to other antimony-based products manufactured and commercialized by Mapei:

under normal cement storage conditions, the reducing action shall remain unchanged for at least six months.

USAGE PRECAUTIONS

The usage precautions are related to the potential risk of inhalation of fine antimony trioxide particles: it has to be pointed out that *the encapsulation in soluble polymer and the micro-granulation completely eliminates the fine fraction*, thus eliminating the aforementioned risk. For further information, please refer to the Safety Data Sheet and to the MA.P.E./Cr 07 safety dossier, available on request.

WARNING

N.B. – Although the technical details and recommendations contained in this product report correspond to the best of our knowledge and experience, all the above information must, in every case, be taken as merely indicative and subject to confirmation after long-term practical applications: for this reason, anyone who intends to use the product must ensure beforehand that it is suitable for the envisaged application: in every case, the user alone is fully responsible for any consequences deriving from the use of the product.

REACH

Mapei Cement Additives are fully REACH-compliant.

CUSTOMS TARIF

38244000



cadd.mapei.com



IL PARTNER MONDIALE DEI COSTRUTTORI